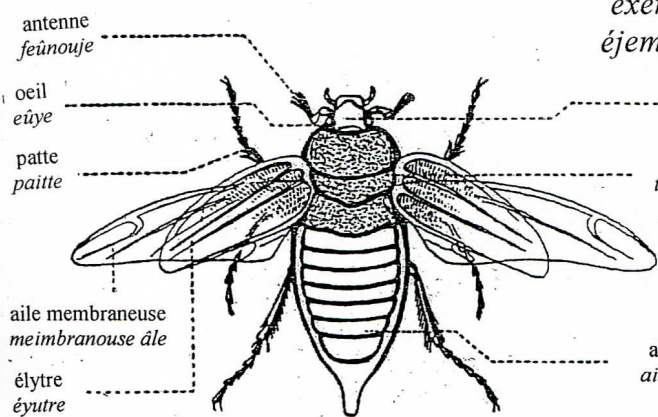
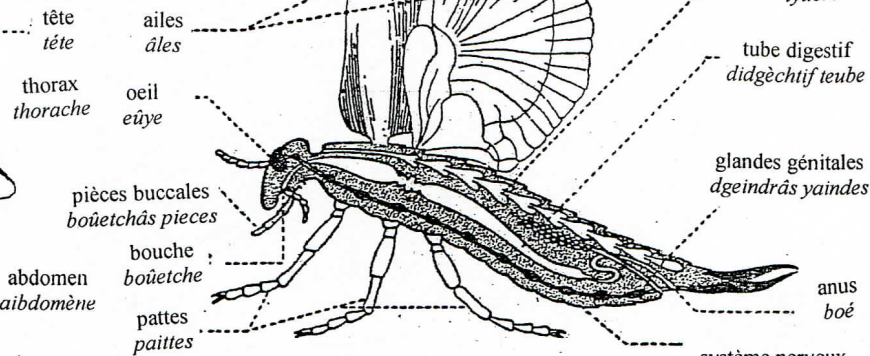


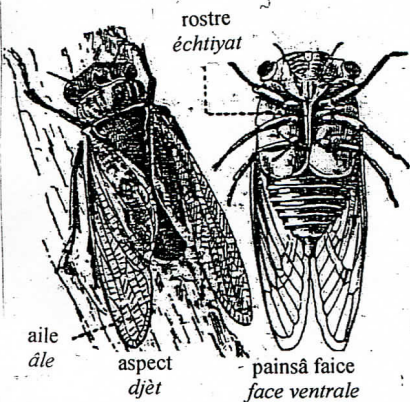
# Insectes *Īnchèctes* exemple : le hanneton éjempye : le caincoïdge



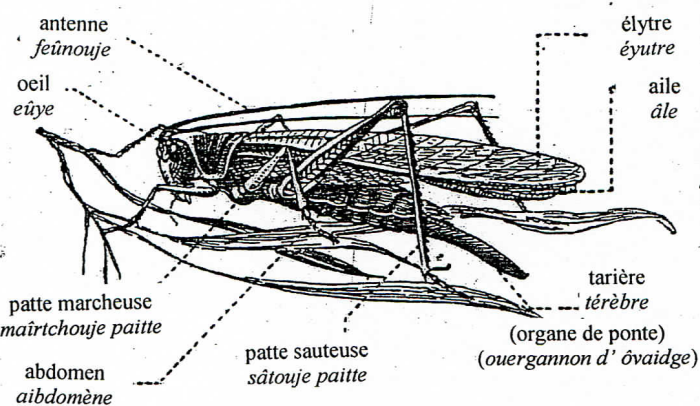
différentes régions et appendices du hanneton  
 diff'reinnes régdions pe raiccrües di caincoïdge



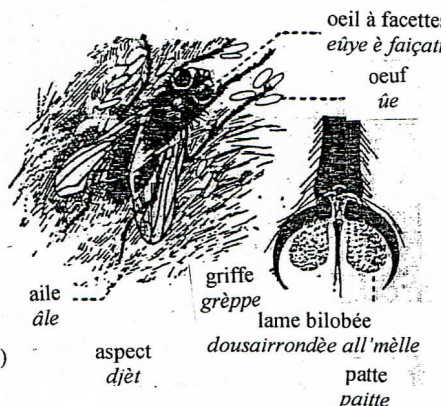
coupe longitudinale du hanneton  
 yondg'tâ cope di caincoïdge



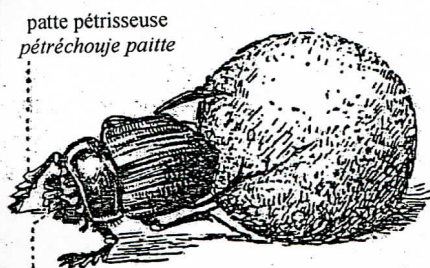
cigale (hémiptère)  
 tchaintouje (dmé-âle)



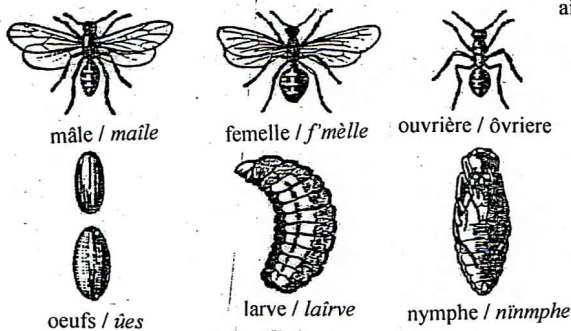
sauterelle (orthoptère)  
 sâtrèlle (daïdroit-âle)



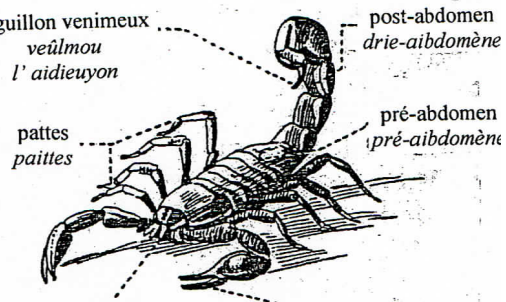
mouche domestique (diptère)  
 peurvèe moüetteche (douâle)



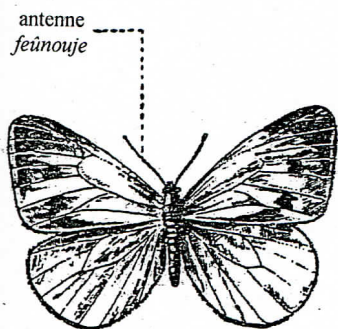
scarabée (coléoptère)  
 échcaïrâbèe (bétatte è éyutre)



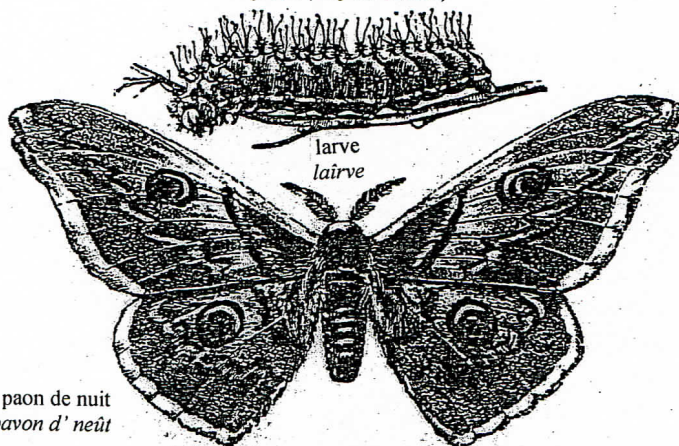
fourmi (hyménoptère)  
 fremi (onç'nâ-bétatte)



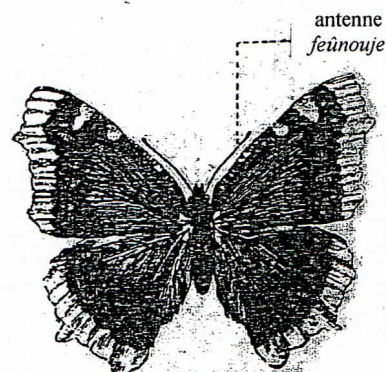
scorpion (aranéide)  
 échcorpion (airainéide)



piéride du chou  
 pieride di tchô



papillon (lépidoptère)  
 païpra (bétatte è échâles)



morio  
 maireūyo